


UPGRADE INSTALLATION PROCEDURES

SIS-TECH Applications is proud to provide you with the new SIL Solver® Version 6.0! You will be sent an email from svogtmann@sis-tech.com titled 'Files have been shared with you.' This is a link to the 'Installation CD.zip' file on our secure file sharing site.

Instructions

SET 1 is for the user who wants to save custom device data sheets. SET 2 is installation procedures. Users who have not added any custom device data sheets will start with SET 2. It is important to follow both the correct set of instructions and the order of the steps.

SET 1: Pre-Installation for users with Custom Device Data Sheets

 Warning: This set is for users with custom device data sheets. If you uninstall and have not saved the working SIL_Data folder to another location, you will lose your custom device data sheets.

To be able to use your specialized data (user created) after the upgrade installation, you will need to save the working SIL_Data folder in an alternate location. Your saved data will be imported into the upgraded version of SIL Solver® with the import data tool.

The specific steps for copying your database folder (SIL_Data) may vary depending on the location of your installation. This folder can be copied anywhere except within the SIL Solver® folder.

Note: An easy method to locate the SIL Solver® folder is to hover over the SIL Solver® desktop icon. Tool tip will display the location. The instructions below are based on Windows OS, the process is the same for Mac users.

1. From Windows Explorer on a PC, or in Mac Parallels, locate the installation folder of SIL Solver®. *Double Click* SILSolver folder. *Right Click* SIL_Data, *click* "Copy". Select another location to store your data, *Right Click* that location, *click* "Paste".

2. Continue with the SET 2 installation instructions. After installation is complete follow the instructions in Section 9, to *Import*, in SIL Solver® Technical Guide Version 6, to recover your user created data.

SET 2: Installation of SIL Solver®

1. The upgrade involves an executable file. If you do not have ADMIN rights to your computer consult with your IT department.
2. Close all applications including SIL Solver®.
3. The previous version of SIL Solver® installed on the computer must be uninstalled before the installation of version 6.0. Use Windows Add/Remove Programs. Uninstalling your previous version will not affect your project files. It will, however, delete your SIL Solver® database located in SIL Data.
4. After uninstal is complete click on the link in the Egnyte email. If given an option **Save** this file to an approved trusted location. If the download starts automatically check your My Documents/Downloads. Antivirus/antispysware programs may quarantine the SIL Solver execution file. If this occurs, restore the files from quarantine.
5. When the download finishes you may receive the option dialog box. Choose open. If no option box pops up then extract the zip file to the same location as the download.

Note: The 'Installation CD' folder also contains the manual for SIL Solver®. This manual will be automatically installed on your hard drive. There is a more detailed walk through in the Technical Reference Guide in Appendix 1 Installation Fundamentals.

6. For Windows XP *Double Click* the 'Setup.exe' file in the 'Installation CD' folder. For Windows 7 *Right Click*, "setup.exe" *Click* "Run as Admin". Follow the on screen instructions to install SIL Solver® 6.0.

Windows 7 users must follow these additional steps.

Windows 7 folders permission

SIL_Solver® 6.0 will create two folders on the on the root directory of the C drive, named “C:\SILSolver_CR_Dbf” and “C:\SILSolver_Projects” as shown on figure 1. In order for to SIL Solver® to function properly in Windows 7, all SIL Solver ® users must have Full permissions control for these two folders.

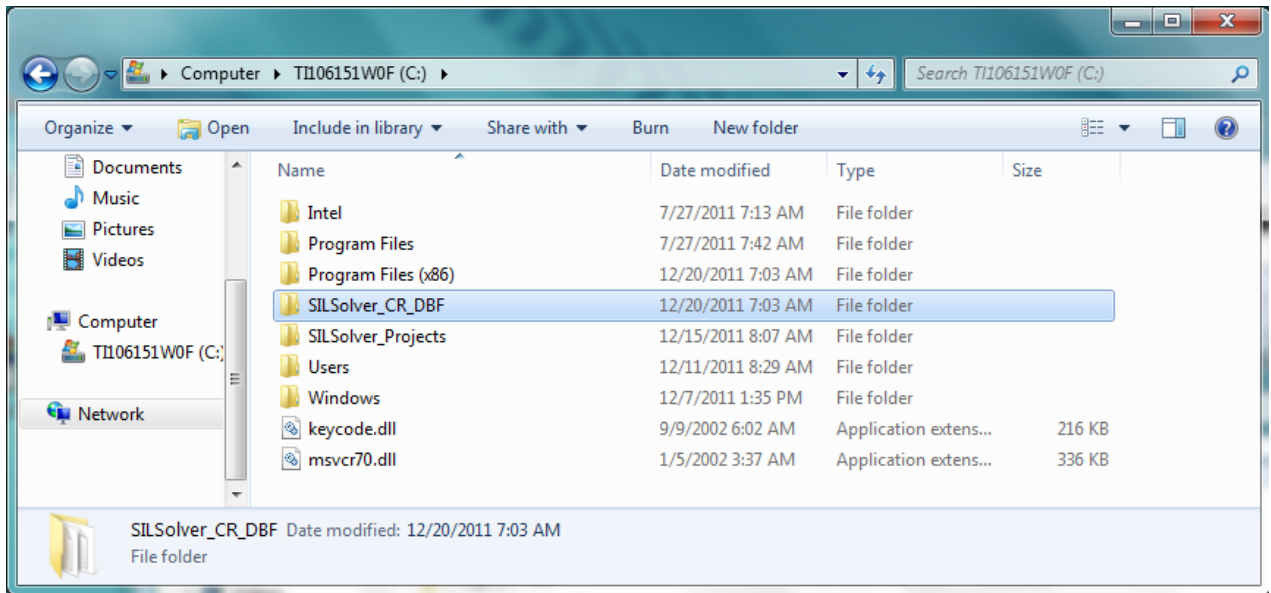


Figure 1 SIL Solver® Working Tables Folders

You can view and change security permissions for folders by completing the following steps:

1. In Windows Explorer, *right-click* the folder you want to work with (“C:\SILSolver_CR_DBF” or “C:\SILSolver_Projects”).

2. From the pop-up menu, select **Properties**, and then in the Properties dialog box click the **Security** tab, as shown on Figure 2.

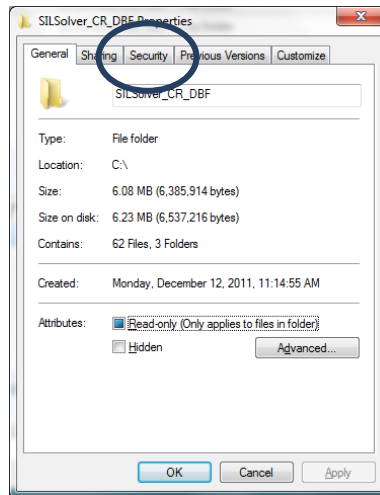


Figure 2 Folder Properties dialog box

3. From the Security Tab *Click Advanced* as shown on Figure 3.

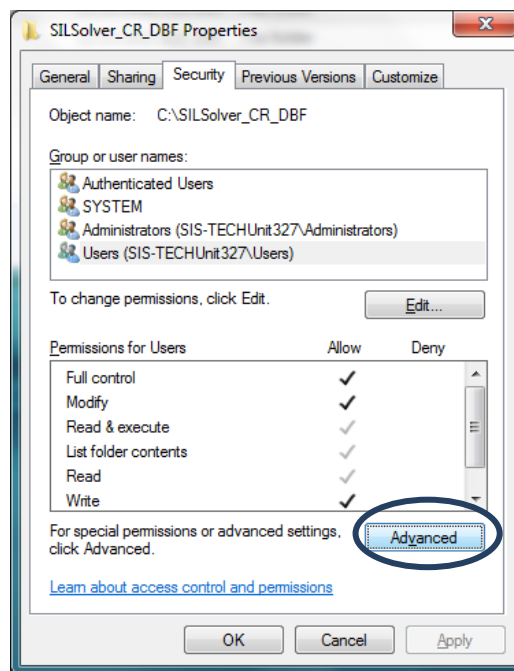


Figure 3 Security Tab

- From the Permissions Tab, *Click* the **User**. In this case there are two users, choose the user that does not have “Full control” in the Permission column, and then *click* the **Change Permission** button, as shown in Figure 4.

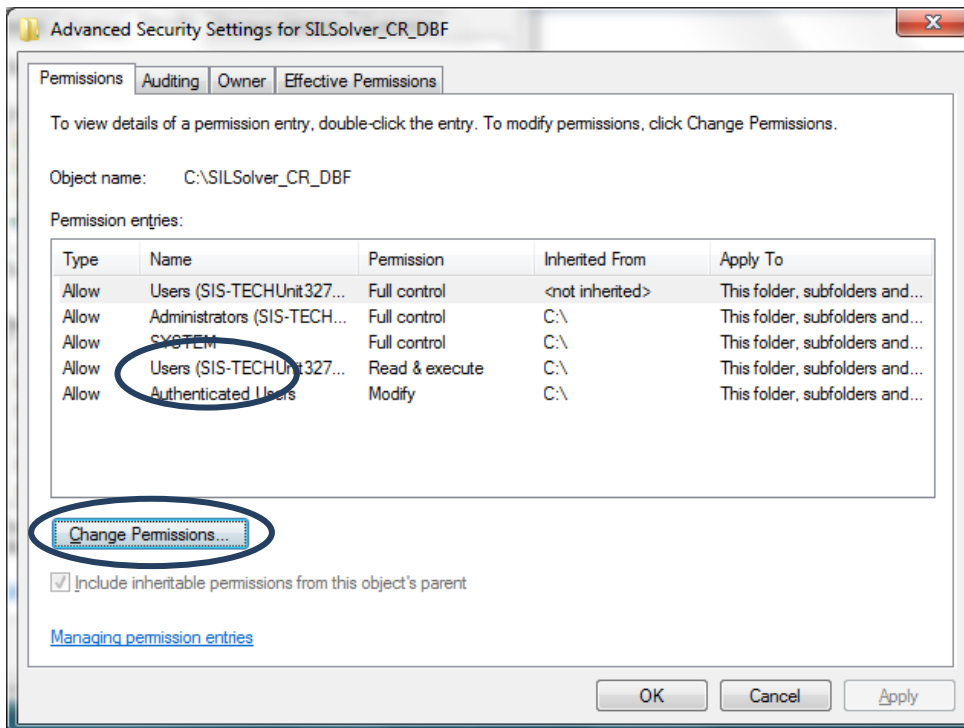


Figure 4 Permission Tab, Change Permissions option

5. *Double Click* the **User** group as shown in Figure 5.

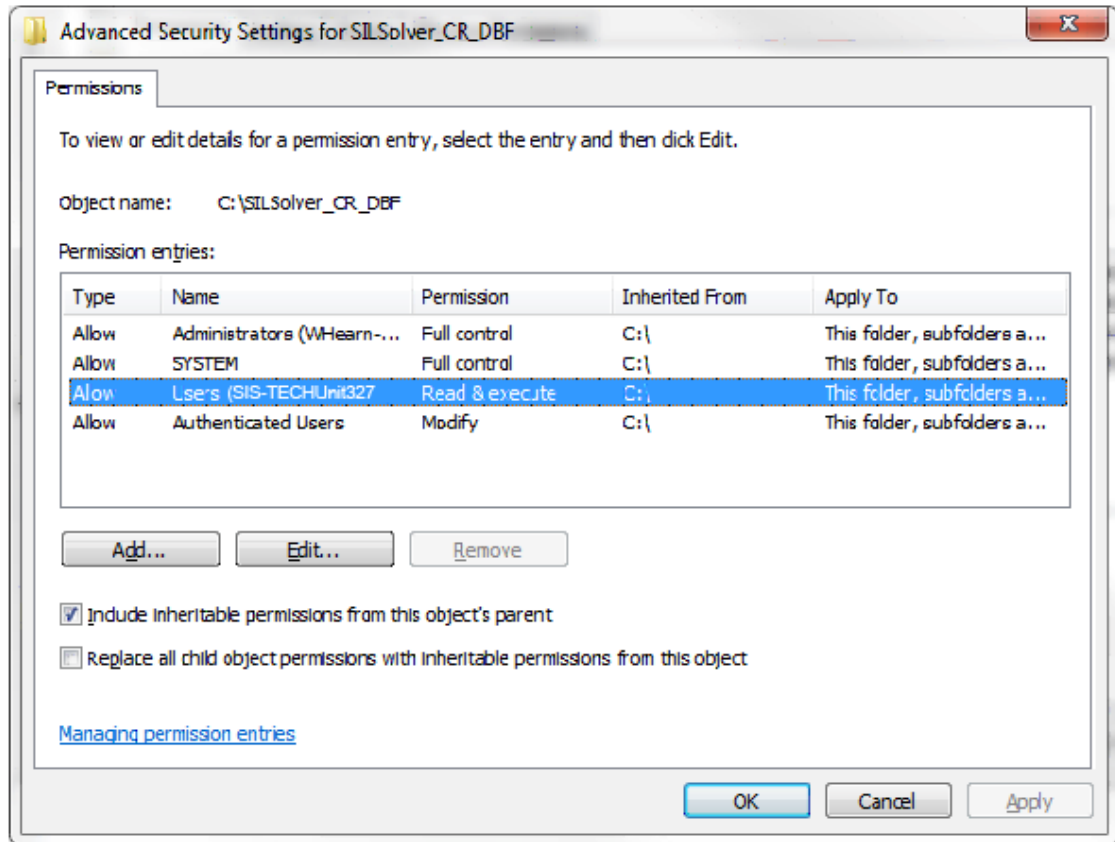


Figure 5 Advanced Security Settings

- From the Object dialog box, Select the Name of the User or User Group, select from the dropdown Apply list “This Folder, subfolders and files” and then Allow full control by clicking the box to place a checkmark.

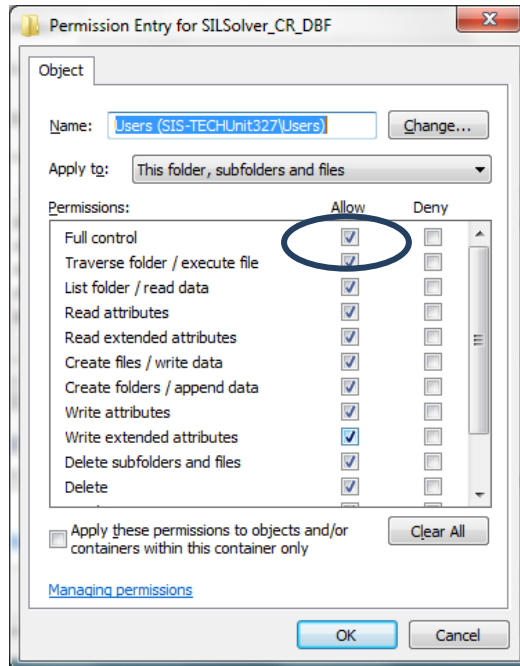


Figure 6 Checkbox for Permissions

- Click **OK**, and then *click Apply* and **OK** on the last two screens that remained open.

Note: Repeat the Steps 1 – 7 for the second folder.